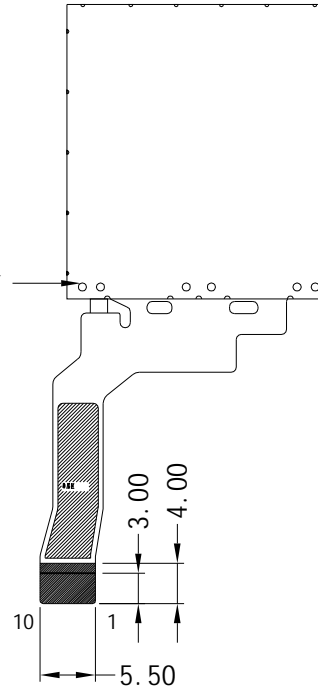


1.5±0.1

胶框使用黑色料

0.30±0.03 FPC+PI 补强



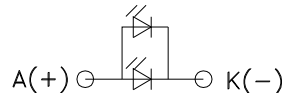
4SPI

PIN	DESCRIPTION
1	RS
2	SDA
3	SCL
4	CS
5	RESET
6	GND
7	GND
8	LEDA
9	LEDK
10	VCC2.8V

LCD型号/类型/分辨率	BOE1.3/IPS/240*240
视角方向	ALL
偏光片	上磨0° /下光90°
驱动IC	ST7789
LED颗数/连接方式/电流	2-LED/并联/40mA
背光底色要求	

VF=3.0±0.2V IF=40MA

LED CIRCUIT DIAGRAM



技术要求:

- 带\*尺寸为重点尺寸, 带()尺寸为参考尺寸
- LCD切割断面崩边≤1/3(单层LCD厚度)
- 平面翘曲度≤0.35mm
- 符合RoHS指令
- 工作温度: -20℃~70℃
- 储存温度: -30℃~80℃
- 建议TP V. A开窗比LCD A. A单边大0.4mm
- 泡棉开窗比LCD A. A单边大0.3mm

REV	SIGN	DESCRIPTION	PIC	DATE
A		首次发行	KZH	2023.08.28

PART DESCRIPTION		LCM		HUA XIAN JING Display Limited www.huaxianjing.com			
DESIGNED		UNIT	SCALE	3rd ANGLE	SIZE	SHEET NUMBER	
CHECKED		mm	1.00	⊙	A4	1 of 1	
APPROVED		PART NUMBER		DRAWING REV.			
		MODEL NAME		PART NUMBER VER.			
		TFT013B067		A		N/A	