

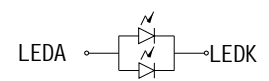
FPC展开出货

### 四线单通道

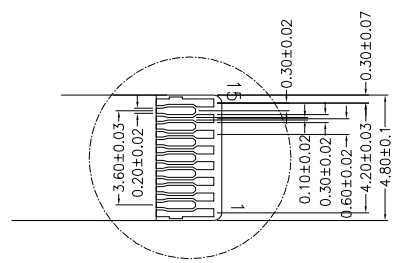
PIN	NAME
1	LEDK
2	GND
3	TE
4	SDI
5	SCL
6	RS
7	CS
8	RESET
9	IOVCC18
10	VCC28
11	VCC28
12	GND
13	GND
14	LEDA
15	LEDA

技术要求:

- 带\*尺寸为重点尺寸, 带()尺寸为参考尺寸
- LCD切割断面崩边≤1/3 (单层LCD厚度)
- 平面翘曲度≤0.35mm
- 符合RoHS指令
- 工作温度: -20°C~70°C
- 储存温度: -30°C~80°C
- 建议TP V. A开窗比LCD A. A单边大0.4mm
- 泡棉开窗比LCD A. A单边大0.3mm



I=20X2mA (定电流驱)  
V=3.0V(参考电压)  
CIRCUIT DIAGRAM



LCD型号/类型/分辨率	BOE1.44/TN/128*128/T=0.4mm
视角方向	6 O'Clock
偏光片	上磨45° /下光45°
驱动IC	ST7735P3
LED颗数/连接方式/电流	2-LED/并联/40mA
背光底色要求	

PART DESCRIPTION		LCM		HUA XIAN JING Display Limited www.huaxianjing.com			
DESIGNED		UNIT	mm	SCALE	1.00	3rd ANGLE	SHEET NUMBER 1 of 1
CHECKED		PART NUMBER			DRAWING REV. A		
APPROVED		MODEL NAME			PART NUMBER VER. N/A		

REV	SIGN	DESCRIPTION	PIG	DATE
A		首次发行	KZH	2022.09.28