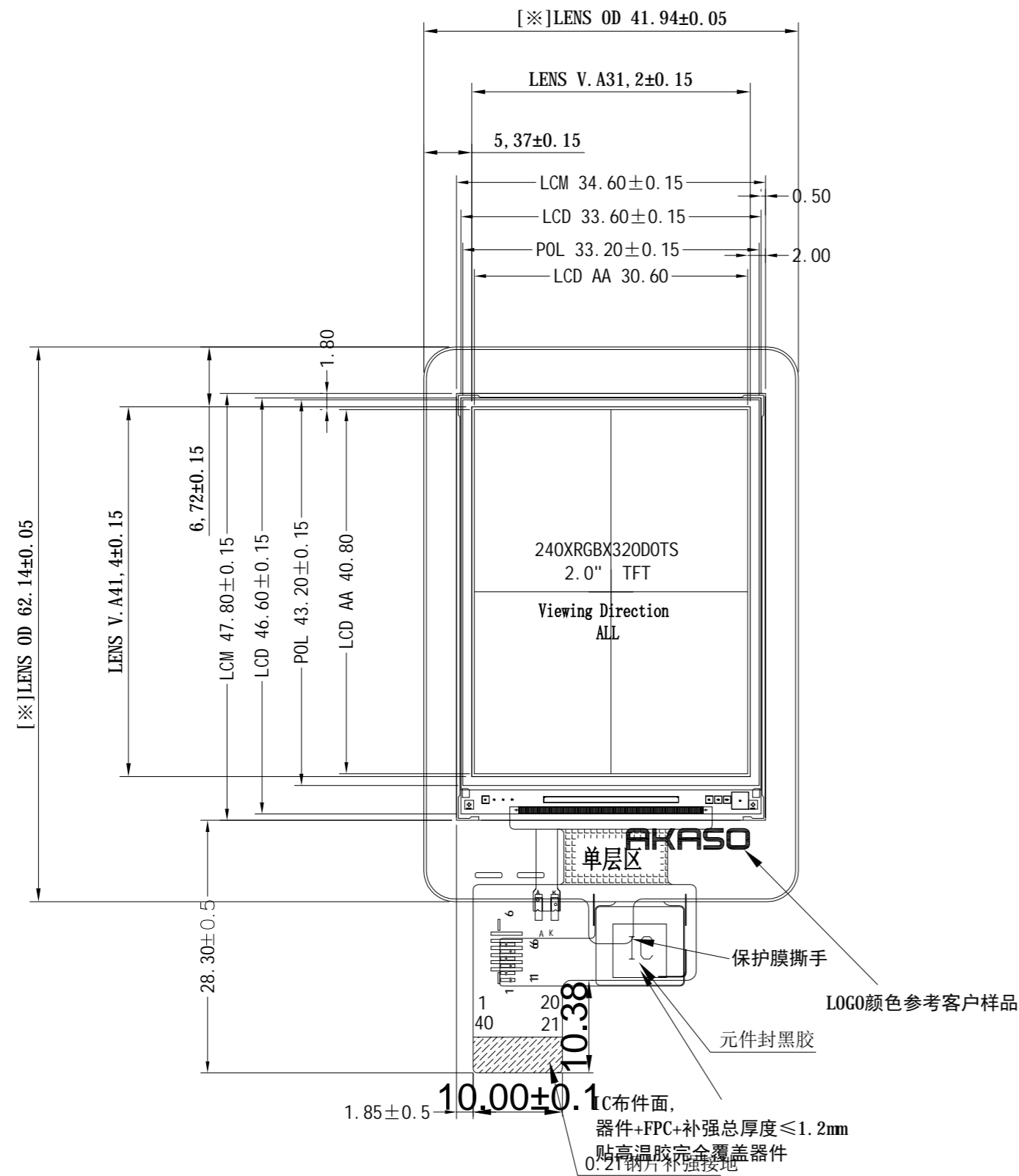


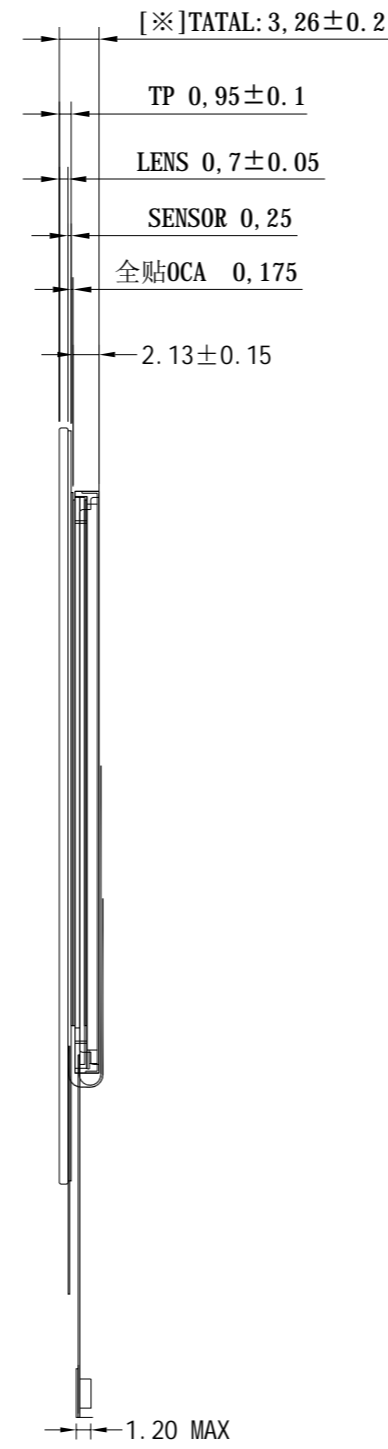
客户确认
(修改意见)

版本	修改日期	修改人	修改内容
V02			
V03			

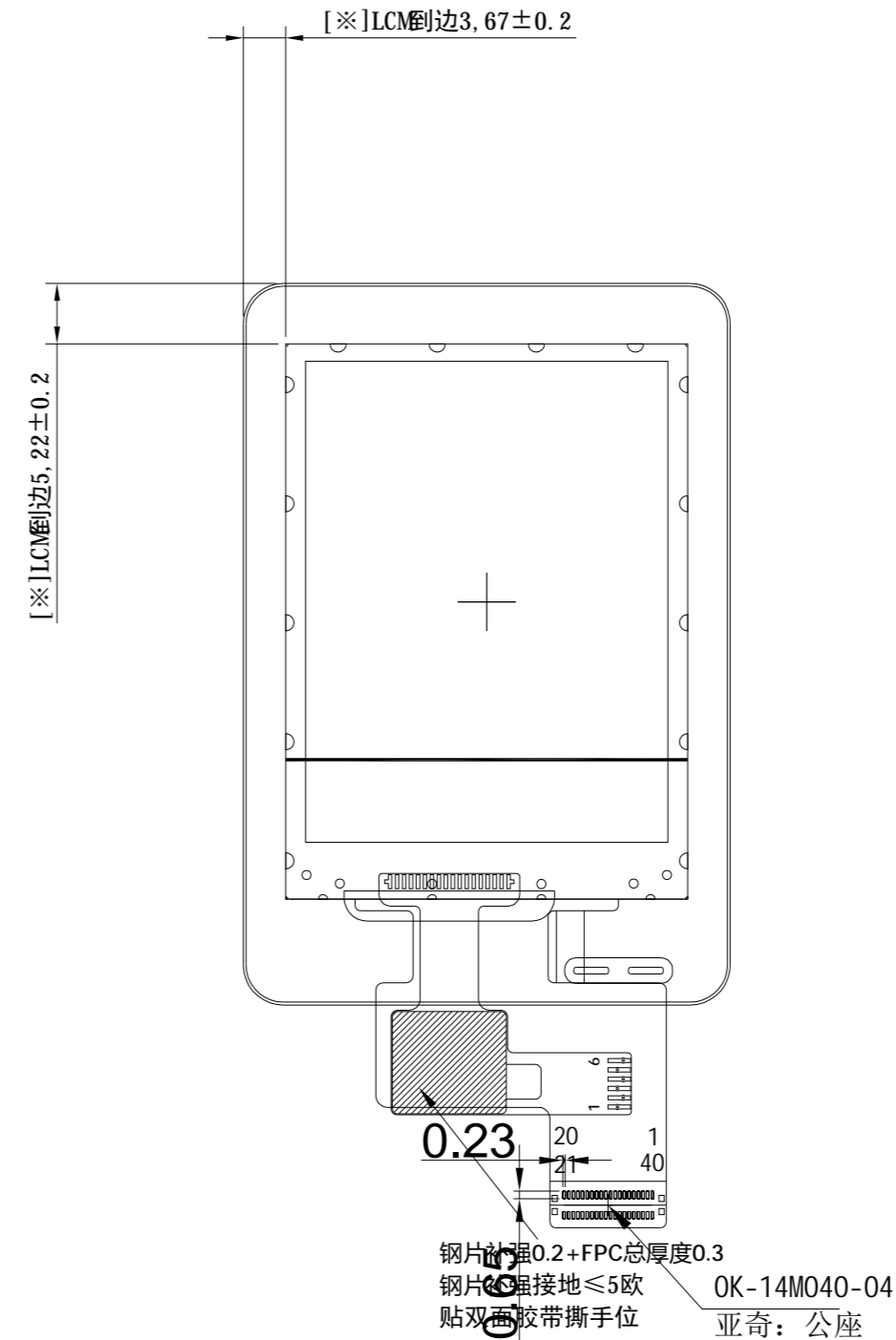
正视图



侧视图



背视图



MCU 8BIT

PIN	SYMBOL	PIN	SYMBOL
1	LEDA	40	GND
2	LEDK	39	TP_INT
3	GND/IM2	38	TP_RST
4	GND/IMO	37	TP_SDA
5	RESET	36	TP_SCL
6	CS	35	TP_VCC
7	RS	34	GND
8	WR	33	NC
9	RD	32	NC
10	GND	31	GND
11	GND	30	NC
12	GND	29	NC
13	GND	28	GND
14	GND	27	NC
15	DO	26	NC
16	D1	25	GND
17	D2	24	VCC
18	D3	23	TE
19	D4	22	D7
20	D5	21	D6

RGB-6bit

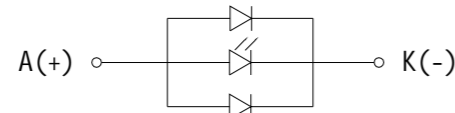
PIN	SYMBOL	PIN	SYMBOL
1	LEDA	40	TP_GND
2	LEDK	39	TP_INT
3	VCC/IM2	38	TP_RST
4	VCC/IMO	37	TP_SDA
5	RESET	36	TP_SCL
6	CS	35	TP_VCC
7	SCL	34	GND
8	GND	33	NC
9	GND	32	NC
10	VSYNC	31	GND
11	HSYNC	30	NC
12	ENABLE	29	NC
13	DOTCLK	28	GND
14	SDA	27	NC
15	DO	26	NC
16	D1	25	GND
17	D2	24	VCC
18	D3	23	TE
19	D4	22	GND
20	D5	21	GND

TP PIN定义

Pin#	Assignment
1	TP_GND
2	TP_INT
3	TP_RST
4	TP_SDA
5	TP_SCL
6	TP_VDD

- 注明:
1. 结构: G+F
 2. IC型号: FT6336U
 3. 玻璃材质: 旭硝子
 4. 透过率: ≥85%
 5. 工作温湿度范围: -20°C~70°C;
储存温湿度范围: -30°C~80°C;
 6. 表面硬度: ≥6H(750gf)CS≥450, DOL≥10
钢球冲击: 64g, 20cm中心点三次无破损
 7. LENS达因值≥32, 达因笔品牌Arcotest
 8. 未标注公差: ±0.20, 贴合角度±1°
 9. 所有的材料符合ROHS标准
 10. [※]为重点尺寸:

LED CIRCUIT DIAGRAM



LCD型号/类型/分辨率	BOE2.0/1PS/240*320
视觉方向	ALL
贴片方式	上油砂0°/下光90°
驱动IC	ST7789
LED颗数/连接方式/电流	3-LED/并联/60mA(冷色系)
模组亮度	

HUA XIAN JING Display Limited

www.huaxianjing.com

DRAWN BY: (绘图):	TITLE: (产品编号):	TFT020BT047	VIEW: (投影方式):	
CHECKED BY: (审核):	CUSTOMER ID: (客户编号):		UNIT: (单位):	mm
APPROVED BY: (批准):	DATE: (日期):	2023.6.28	SCALE: (比例):	1:1
Standard tolerance: (标准公差):	VERSION NUMBER: (版本):			