

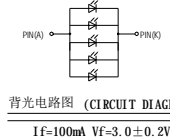
No	PIN NAME
1	GND
2	RESET
3	SCL
4	D/C
5	CSX
6	SDA
7	SDO
8	GND
9	VDD
10	LED_A
11	LED_K
12	LED_K
13	LED_K
14	LED_K
15	X-
16	Y-
17	X+
18	Y+

逻辑

Pin NO.	Assignment
1	YUY+
2	XL X+
3	YDY-
4	XR X-

技术要求:

- 带*尺寸为重点尺寸, 带 () 尺寸为参考尺寸
- LCD切割断面崩边 ≤ 1/3 (单层LCD厚度)
- 平面翘曲度 ≤ 0.2mm
- 符合RoHS指令
- 工作温度: -20°C ~ 70°C
- 储存温度: -30°C ~ 80°C
- 建议TP V. A开窗比LCD A. A单边大0.4mm
- 泡棉开窗比LCD A. A单边大0.3mm



LCD型号/类型/分辨率	BOE3.2/IPS
视角方向	ALL
偏光片	上砂0度/下光90度
驱动IC/是否带RAM	ST7789V2
接口类型	SPI 4W
LED颗数/连接方式/电流	5颗灯, (1F=100MA)
亮度	250MNI/300MTY/CD/M2

PART DESCRIPTION					LCM		HUA XIAN JING Display Limited www.huaxianjing.com			
APPROVED					UNIT	SCALE	3rd ANGLE	SIZE	SHEET NUMBER	
CHECKED					mm	1.00	⊕	A4	1 of 1	
DESIGNED					PART NUMBER				DRAWING REV.	
					MODEL NAME				A	
					TFT032BT022				PART NUMBER VER.	
									N/A	

REV	SIGN	DESCRIPTION	PIC	DATE
A		首次发行	KZH	2023.05.22