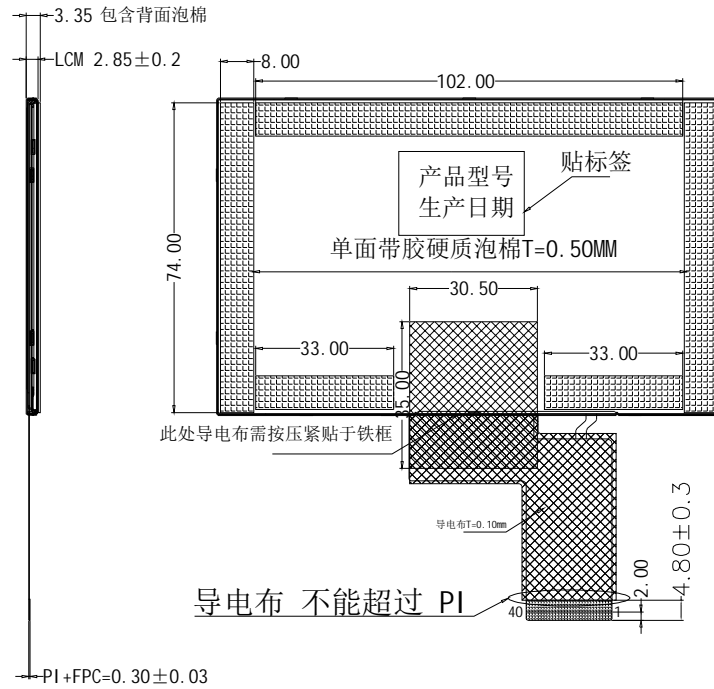
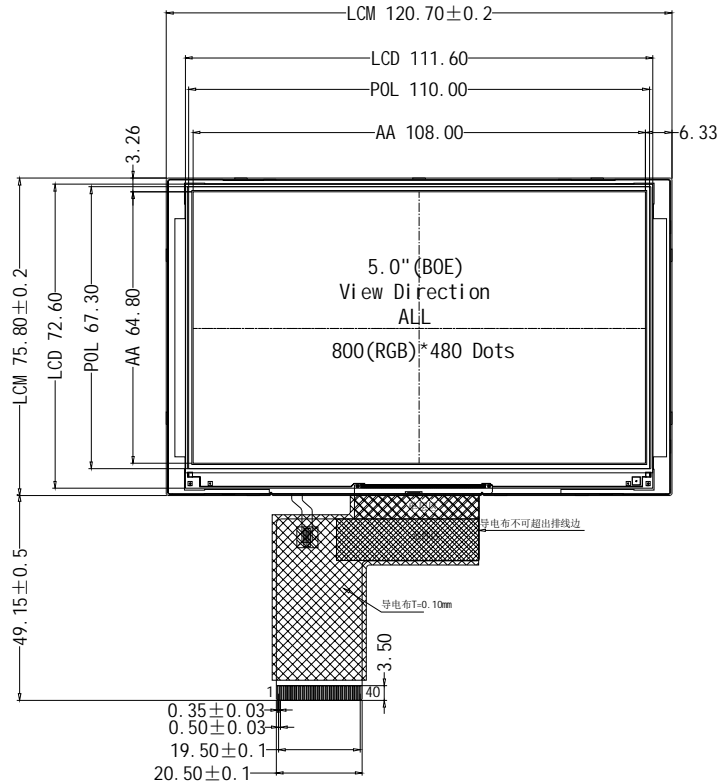


模组带上铁框

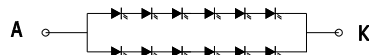


LCD PIN ASSIGNMENT

PIN No.	SYMBOL
1	LEDK
2	LEDA
3	GND
4	VDD
5	RO
6	R1
7	R2
8	R3
9	R4
10	R5
11	R6
12	R7
13	G0
14	G1
15	G2
16	G3
17	G4
18	G5
19	G6
20	G7
21	B0
22	B1
23	B2
24	B3
25	B4
26	B5
27	B6
28	B7
29	GND
30	DCLK
31	DISP
32	HSYNC
33	VSYSN
34	DE
35	NC
36	GND
37	NC
38	NC
39	NC
40	NC

LCD型号/类型/分辨率	BOE5.0/1PS/800*480
视角方向	ALL
偏光片	上细砂0° /下光90°
驱动IC	ST7265
LED颗数/连接方式/电流	12-LED 6串/2并/40mA
模组亮度	

If= 40 mA; VF=16.8-20.4V;



- NOTES:
1. DISPLAY TYPE: 5.0 INCH TFT /TRANSMISSIVE
 2. BACKLIGHT: 12 CHIP WHITE LED, IN PARALLEL
 3. OPERATING TEMP: -30° C~+80° C
 4. STORAGE TEMP: -30° C~+85° C
 5. RESOLUTION: 800(RGB)x480
 6. LCD IC: ST7265
 7. LCM+TP Typical Lumiance: (TYP)
 8. "()"reference dimension. "*"critical dimension
 9. RoHS Compliant

REV	SIGN	DESCRIPTION	PIC	DATE
		修改泡棉及增加条导电布	KZH	2023.06.30
		修改排线, 增加两条导电布	KZH	2023.06.15
B		增加两横条泡棉	KZH	2023.05.04
A		首次发行	KZH	2023.04.28

PART DESCRIPTION		LCM		HUA XIAN JING Display Limited www.huaxianjing.com				
DESIGNED		UNIT	SCALE	3rd ANGLE	SIZE	SHEET NUMBER		
CHECKED		mm	1.00		A4	1 of 1		
APPROVED		PART NUMBER			DRAWING REV.			
		MODEL NAME			PART NUMBER VER.			
		TFT050B057			N/A			