

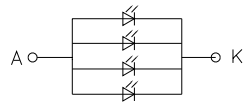
ID0 — 10K — 3.3V
ID1 — 10K — 3.3V

PIN	DESCRIPTION
1	LED+
2	LED-
3	LED-
4	GND
5	VCC
6	RESET
7	NC
8	NC
9	SDA
10	SCL
11	CS
12	CLK
13	DE
14	VS
15	HS
16	B0
17	B1
18	B2
19	B3
20	B4
21	B5
22	B6
23	B7
24	B8
25	B9
26	B10
27	B11
28	B12
29	B13
30	B14
31	B15
32	B16
33	B17
34	GND
35	NC
36	ID0
37	ID1
38	NC
39	NC
40	GND

LCD型号/类型/分辨率	BOE/IPS/379*960
视角方向	ALL
偏光片	上油砂0°/下光90°
驱动IC	ST7701S
LED颗数/连接方式/电流	4-LED/4并/80mA
背光底色要求	

技术要求:

1. 未标注尺寸公差都按±0.2mm
2. LCD切割断面崩边≤1/3 (单层LCD厚度)
3. 平面翘曲度≤0.35mm
4. 符合RoHS指令
5. 工作温度: -20℃~70℃
6. 储存温度: -30℃~80℃
7. 建议TP V. A开窗比LCD A. A单边大0.4mm
8. 泡棉开窗比LCD A. A单边大0.3mm



BACKLIGHT CIRCUIT

VF=3V, IF=80mA.

REV	SIGN	DESCRIPTION	PIC	DATE
		首次发行	BILL	2023.04.17

PART DESCRIPTION		LCM		HUA XIAN JING Display Limited			
				www.huaxianjing.com			
DESIGNED		UNIT	SCALE	3rd ANGLE	SIZE	SHEET NUMBER	
		mm	1.00		A4	1 of 1	
CHECKED		PART NUMBER				DRAWING REV.	
						A	
APPROVED		MODEL NAME				PART NUMBER VER.	
		TFT286B008				N/A	